

Titan FTP Server is the reliable, secure file transfer solution with the performance that businesses demand. Easy setup, precise configuration controls, and virtually unlimited scalability with the Enterprise Plus edition, Titan is designed to address your needs now and in the future.

SECURITY AND ACCESS CONTROL

Titan permissions can be set at the user, group, or server level. Smart features like auto-banning users and IP addresses helps to avoid unauthorized access.

Helping you to be proactive about security, Titan FTP Server provides rich configuration options to assure secure access, such as blocking FXP and anti-timeout measures. Notifications keep you informed about unusual activity and automation can shut down potential attacks instantly.

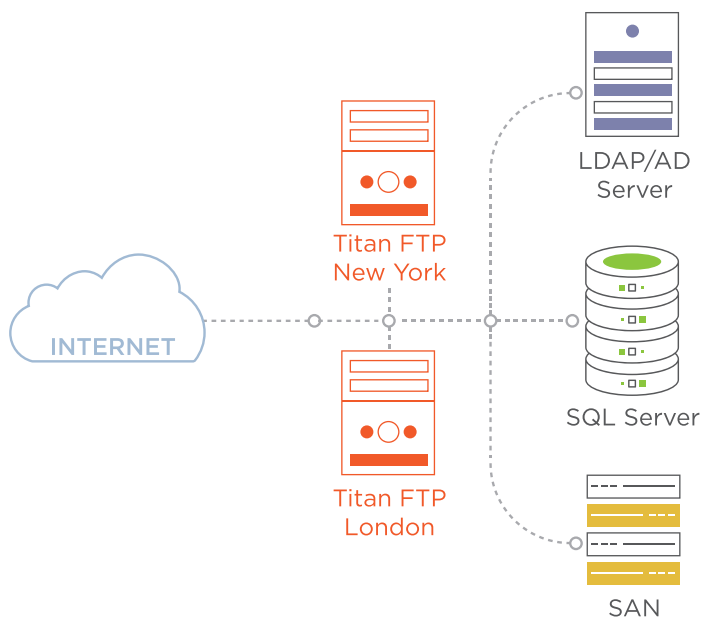
IP Address whitelisting or blacklisting, and banning of specific file types lets you manage interactions with your Titan Server. With its “security-first” design, Titan gives you confidence and control.

KEY FEATURES

- TLS for secure transfers
- Password encryption
- SSH/SFTP support
- Web User interface
- Host Key support
- AD and LDAP support
- Clustering for HA and Failover

SCALABILITY

Titan FTP Server Enterprise+ lets you cluster 2 or more servers to support high availability and throughput.



Failover

Active/Active or Active/Passive failover configurations are supported. Apply updates without disruption and eliminate downtime due to hardware issues.

High Throughput

Multiple Titan servers can be clustered to handle large file transfer volumes. Used with a load balancer, a round-robin or a least-busy configuration distributes the workload across servers.

CISCO RECOMMENDED

Cisco Systems recommends Titan FTP Server as a preferred backup server for Cisco Unified Communications Suite. Titan is certified through the Cisco Technology Developer Partner Program (CTDP) to work seamlessly with CUCM to ensure secure backup procedures. Titan FTP Server is the secure, reliable solution that makes CUCM backup an easy, set-it-and-forget-it process.

ADVANCED FEATURES

Titan FTP Server is the most secure, scalable and fully-featured SFTP server available.

Virtual Folders

Titan gives your users access to nearly unlimited data through virtual folders. Data stores on your LAN or in Azure can be mapped into the user or group's directory space. Titan's web user interface allows easy access to files on the Titan Server or on your LAN, making it simple for users working remotely to securely access all the files that they need.

Authentication

Titan FTP Server integrates with the directory services that you are already using - either Active Directory or LDAP* - to simplify user management. Titan also supports native authentication if your organization is not using other directory services for authentication.

Multiple Implementation Options

Titan FTP Server is available on-premises, or as a budget-friendly Pay-As-You-Go service in Azure and AWS. The cloud implementation of Titan helps you eliminate the high cost of hardware and the time and effort of hardware management.

*Available in Titan Enterprise+ only

SYSTEM REQUIREMENTS

Operating System

Windows Server 2016 and higher

Processor

2 GHz Pentium® class

Memory

16GB of RAM required

32GB RAM recommended

Disk Space

Minimum 100MB of free space